



Thorough research of this special topic regarding the influence of various factors

Yeah we did it!

Author 1 Author 2
Institute, Dept., University
Date of presentation



Outline

Introduction

Methods

Results
Part 1

Figure Examples

Conclusions

Outline

Introduction

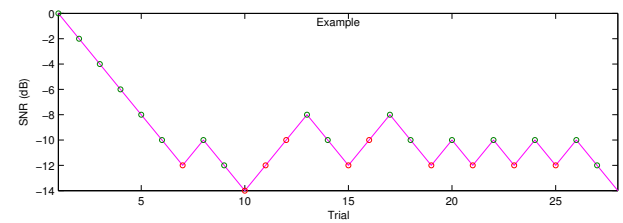
Methods

Results
Part 1

Figure Examples

Conclusions

Introduction Introduction Slide 1



Default lists:

- Citations ([Macherey et al., 2006](#)) and [Macherey et al. \(2006\)](#)
- references have a clickable link to Pubmed or Amazon
- Standard abbreviations \eg and \ie for e. g. and i. e.
- Units like 900 pps
- **Highlights** and *highlights*

Outline

Introduction

Methods

Results
Part 1

Figure Examples

Conclusions

Outline

Introduction

Methods

Results
Part 1

Figure Examples

Conclusions

Results Slide 1

- You can replace the footer by a minimal version

Outline

Introduction

Methods

Results

Part 1

Figure Examples

Conclusions

Figure Examples Full Screen

- You can show full-screen figures as on the next slide

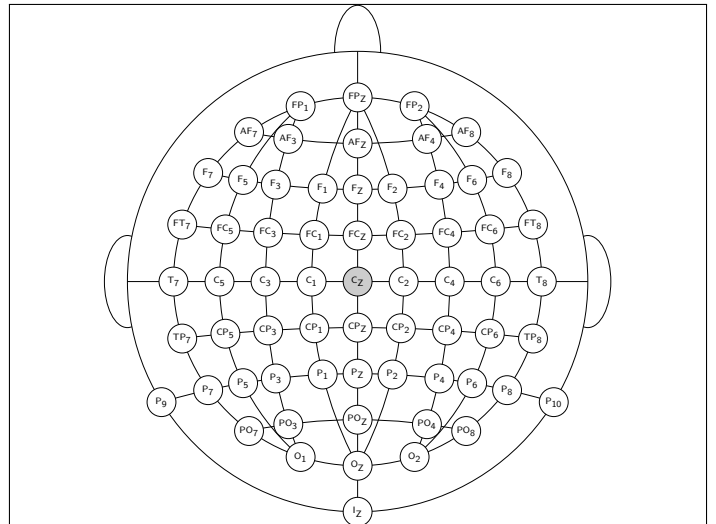


Figure Examples Fill Vertical

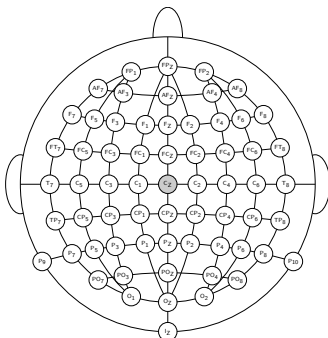


Figure Examples Without Caption

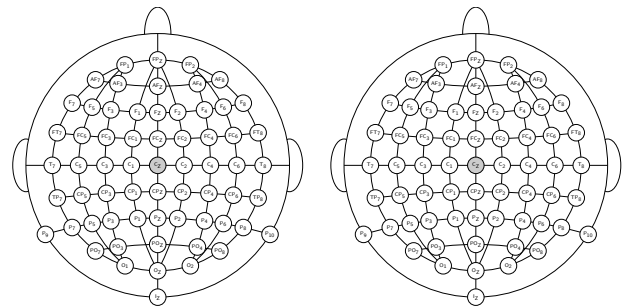
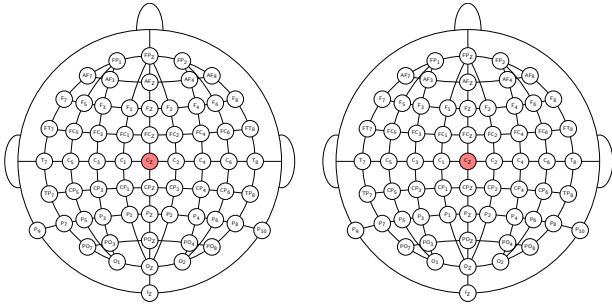


Figure Examples Animated



7

KU LEUVEN

Figure Examples Animated 2

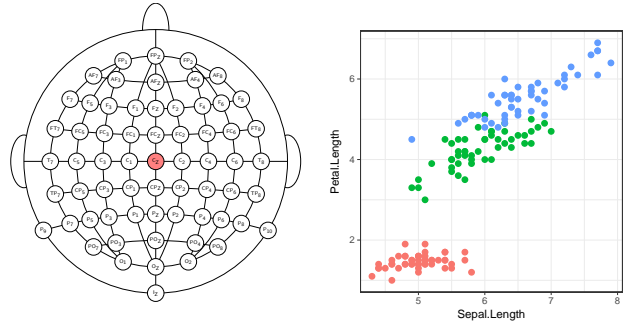


Figure: iris data

8

KU LEUVEN

Figure Examples With Caption

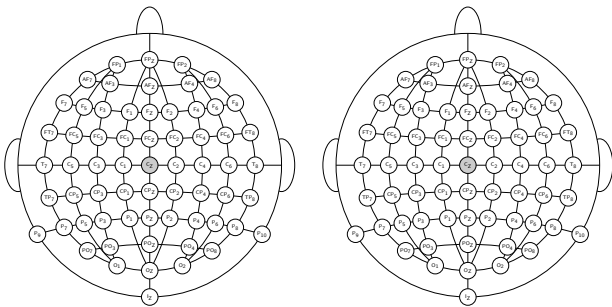


Figure: The 10-20 system

Figure: The 10-20 system

9

KU LEUVEN

Outline

Introduction

Methods

Results

Part 1

Figure Examples

Conclusions

KU LEUVEN

Conclusions

Numbered lists:

1. First paragraph
2. Second paragraph
3. Third paragraph
Continued paragraphs

10

KU LEUVEN

Bibliography I



Macherey, O, A van Wieringen, RP Carlyon, JM Deeks, and J Wouters (2006).
"Asymmetric pulses in cochlear implants: effects of pulse shape, polarity, and rate."
In: *J Assoc Res Otolaryngol* 7.3, pp. 253-66. PMID: 16715356.

11

KU LEUVEN